

Educating, Informing  
& Assisting  
God's Natural Healing Way  
Ministries, Inc.

**We Believe**

- 1. That God made Man in His Image (I Corinthians 11:7); therefore, He would not have made Man in such a way physically, emotionally, or spiritually that he could not stay healthy.**
- 2. That God put every single thing on this Earth for a purpose; He had a *plan* and a *purpose* for EVERYTHING.**
- 3. That if Man will utilize all of the natural resources put here by God, it is possible to stay healthy and completely do away with dis-ease.**

Copyright ©2012 God's Natural Healing Way Ministries, Inc.

*FOR HEALING OF MIND, BODY, AND SPIRIT  
THROUGH GOD'S NATURAL HEALING WAY*

*This publication will summarize the services that our practice has available to you. It is our hope that you will provide us with the opportunity to work with you. We are also glad to see clients in our office, but we can work with anyone via email, US Mail and/or telephone.*

*Our website <http://www.godsnaturalmedicine.com> is designed so that anyone can utilize our services whether or not they live close to us. We began our Ministry in 1998 simply by the avenue of our HealthChek evaluation and saliva samples through the mail.*

# Services

## **PSE - (PERSONAL SPIRITUAL EVALUATION) WHICH MEASURES VITAL FORCE. \***

The concept of the vital force is fascinating and integral to understanding homeopathic medicine. It is really God's Way for us to have healing and wellness. This concept helps to explain the dynamics of how the potentized remedy interacts with the sick person to effect a cure. Vital force is not a biochemical entity (relating to the chemical substances present in living organisms and the reactions and methods used to identify or characterize them). Rather, it is a bio-electrical energy (electric current generated by living tissue) that affects a human's mental and physical functioning. It is that quality which animates living organisms and constantly seeks a state of bodily balance and health in an inherently intelligent way.

With the aid of your saliva, our equipment reads your Vital Force. This is not a means of diagnosing a disease.

## **VANTAGE MERIDIAN STRESS ASSESSMENT - MEASURES THE ENERGY AT THE MERIDIAN POINTS \***

Directs the practitioner to probable areas of imbalance. The Biomeridian technology is used in various health care practices around the world. It gives practitioners more information to consider, while trying to bring their client's energetic disturbances back into balance.



1. Biomeridian - Meridian Stress Assessment (MSA) is used to conduct a comprehensive evaluation of a person's energetic health and balance. This process involves measuring electrical conductivity at responsive points (meridian points) on the skin - typically on the hands and feet. The locations of the test point generally correspond to those of acupuncture points. These measurements are recorded using the Biomeridian to help provide a profile of a patient's present condition.
2. According to European medical research, acupuncture points are related to the body's organs and organ systems. Major groups of points are connected through channels, or meridians. Twenty of these meridians begin or end on the hands and feet.
3. As a patient moves toward or away from health, the condition of any particular organ or system can be sensed along the meridians at representative points. As a result, stress associated with the corresponding organs can be surveyed using the indicated points.
4. After the initial measurements with the biomeridian have been taken and recorded, the results can be reviewed. If stress values are above or below equilibrium, the System's extensive computer database will allow consideration of a wide range of possibilities that might help the patient regain a healthy balance. The MSAS allows consideration of thousands of herbal, homeopathic, and nutritional products.
5. Overall, an Biomeridian MSAS provides a completely non-invasive method for gaining valuable information about the body's vital functions. The primary objective of this procedure is to disclose patterns of stress and to provide feedback for use in a program to help restore each system and meridian to an appropriate balance.
6. **DISCLAIMER:** Biomeridian MSAS-Professional **does not provide a medical diagnosis.** If patients suspect that they need medical intervention, they should consult their physicians who can provide medical diagnosis and prescribe appropriate treatment regimens.

## **HAIR TISSUE MINERAL ANALYSIS (HTMA) \***



Hair tissue mineral analysis (HTMA), is an analytical test which measures the mineral content of the hair. The sampled hair, obtained by cutting the first inch and one-half of growth closest to the scalp at the nape of the neck, is prepared in a licensed clinical laboratory (Trace Elements, Inc.) through a series of chemical and high temperature digestive procedures. Testing is then performed using highly sophisticated detection equipment and methods to achieve the most accurate and precise results. A HTMA reveals a unique metabolic world: intracellular activity, which cannot be seen through most other tests. This provides a blueprint of the biochemistry occurring during the period of hair growth and development.

**NOTE:** The laboratory test results and the comprehensive report should not be construed as diagnostic. This analysis is provided only as an additional source of information to the attending doctor.

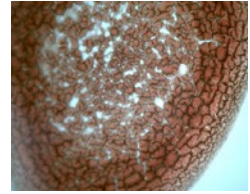
Test results are obtained by a licensed clinical laboratory adhering to analytical procedures that comply with governmental protocol and standards established by Trace Elements, Inc. U.S.A. The interpretive data based upon these results is defined by research conducted by David L. Watts, Ph.D. It is **not a means to provide a medical diagnosis.**

## **DRIED BLOOD CELL ANALYSIS**

Dried blood cell analysis is a simple way of assessing general health conditions. It can show a possible systemic candida overgrowth, inflammation, acidity, bowel stress, adrenal stress, hormonal imbalance, heavy metal toxicity,

foreign protein, lung/liver/kidney stress, and more. You will prick your finger to obtain several blood droplets that will be placed on a microscope slide. After a few minutes have been allowed for them to dry, we will view these droplets under the microscope. We will then decide a plan of action, based upon all information.

Dried Blood Analysis examines oxidative stress in the drying patterns of blood blots. Information is revealed about potential physiological conditions. **Dried Blood Analysis is NOT a means of diagnosing disease**, but rather a way of looking at free radical damage, and toxic conditions in the body. The intention is to look for patterns of oxidative stress or free radical activity. Healthy blood shows a tight, fibrin rich clotting pattern with no white puddles. Degenerative blood shows poor clotting, minimal fibrin formation with many white puddles. Each sample of blood will dry differently, and each formation in a blot is indicative of a specific health-related issue.



## NATURAL HEALTH CONSULTING

---

I discuss and assess health issues or symptoms with the client. These assessments include educating individuals about various methods of alternative health and recommending particular methods that will benefit a client. I sometimes will have to refer individuals to licensed practitioners or other health care providers because it is beyond the scope of my training.

We will discuss your present and/or future needs that will include herbs, vitamins, minerals, essential oils, homeopathic remedies and nutrition. Although I have training in all of these areas, I **do not use these to diagnose or “cure” diseases**.

However, I believe that my knowledge of several alternative health options will assist my clients in making the decision as to what discipline might be an appropriate starting point, and I will then assist them in being referred to those who can provide the necessary needs.

## HEALTH CHEK 2000 EVALUATION \*

---

Our evaluation is a comprehensive computer health appraisal that is based upon your answers to a questionnaire that you fill out. It is easy to understand and is simple to complete. It is a yes-sometimes-no answer system that is divided into the following categories: Body Characteristics, Emotions/Behaviors, Feelings/History, Pain/Swelling, Tendency to..., Do You Have..., Have You Experience, Female, Male. You answer all the questions and send the questionnaire to us. We'll do the rest!

You'll receive a full report of all imbalances in the following: Miasms, Stress & Emotional; including stress reactions, internal imagery, and sleep. Organs, Systems, Hormonal System, Constitutions and Body Types, Immune Systems including bacterial, fungal, viral, and lymphatic, systems, Glands, Male System or Female System, And you'll also receive recommendations for remedies made specifically for you and/or practitioner products, which are synergistic and homeopathic in nature—for the natural restoring of your health! This is **not a diagnostic tool**, it is simply an informational assessment.

# Remedies & Nutritionals

## GOD'S MEDICINE: HOMEOPATHIC REMEDIES & HERBAL MEDICINES \*

---

The Scriptures tell us that God made everything for a specific purpose and we know this as we read the creation in Genesis. Research has shown that many plants that God created often times have minerals, vitamins, and even antibiotic substances that can build up our body's immune system against disease. In addition, all aspects of nature, whether mineral, vegetable, or animal, also have underlying energy patterns. **Homeopathic remedies** are derived from these three kingdoms. The energy pattern or vital force of these remedies is enhanced by potentization and when matched with the vital force of people, promotes a healing response, **This is God's Medicine!** We will formulate remedies specific to you and your needs through electronic homeopathy.

In homeopathy, energy qualities of the remedy (*as revealed by the proving of the remedy---this is the unusual sensations/symptoms produced and/or alterations from the normal health experienced by one taking the drug*) are matched with the unhealthy person's energy qualities (*as revealed by physical, mental, and emotional symptoms*). Through the law of similars (*this is the idea that anything that can cause one to be sick can also help one to become well when given the homeopathic frequency of it*), unhealthy people can be cured. Perhaps the similar vibratory qualities of the remedy and the sick person produce a harmonic resonance which helps to balance the person's vital force. If the **vital force** is aligned, then the defenses maintain a state of bodily balance; if the life force is disturbed, illness results. Sometimes we may “mingle” a homeopathic remedy with a particular herb that will perform the action that is needed.

Our Professional Product companies offer us best quality products and even guarantee potency to us. We have enough companies that we can get almost any nutritional that you might want.

**Note:** Whenever working with a health food store or other product provider, however, we will direct you to their high quality line of products.

